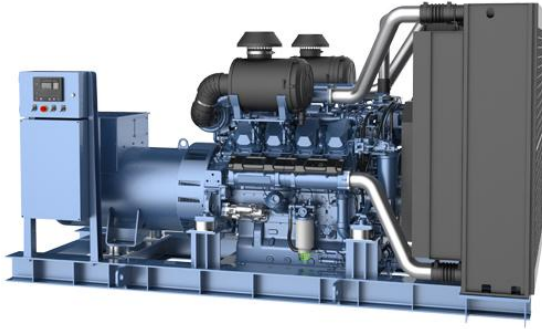




# Model:DB-640GF

Powered by Weichai



### Applicable Standards

- ISO9001
- ISO14001
- ISO45001
- CE

### Factory Inspection

- Complete design and quality inspection
- 0%, 25%, 50%, 75%, 100%, 110% load test
- Function test

### 640KW 800KVA Diesel Generator Set Datasheet

Genset model	DB-640GF
Prime power	640kW
	800kVA
Standby power	700kW
	875kVA
Rated voltage(V)	400/230 (customizable)
Rate current(A)	1152A
Power factor	0.8
Frequency(Hz)	50
Speed(rpm)	1500
Phase:	3 phase 4 wire
Noise level:	105dB at 7m ( open type diesel genset)
	75dB at 7m(silent type diesel genset)

### Environmental Conditions

- Ambient temperature: +5° C~+40° C
- Altitude: ≤1000m
- Remark: If your conditions are different from the above, please contact our sales.

Type	Dimensions(mm) L*W*H	Weight(kg)	Base bottom fuel tank (Liter)
Open Type	4350*2000*2200	5900	Without
Silent Type	6000*2400*2800	12050	8 hours

- Remark: The dimensions and weight of the above diesel generator set are for reference only, and the specific dimensions and weight of the genset after production completion shall prevail.



## Engine Specifications

<b>Manufacturer</b>	<b>Weichai</b>
<b>Model</b>	<b>8M33D800E200</b>
Engine output-prime	730kW
Engine output-standby	800kW
Frequency:	50Hz
Speed:	1500rpm
Cylinders no. & Type:	8 cylinders, V type, 4 stroke, diesel engine, water-cooled
Aspiration:	Turbocharged and Intercooled
Bore*stroke	150*185mm
Displacement	26.14L
Compression Ratio	15:1
Governor	Electronic speed governor
Starter motor voltage:	24V DC
Type Injection System:	direct injection
Oil capacity (Low / High):	90L/105L
Cooling way	Water Radiator & fan
Coolant capacity of the engine:	62.2L
Thermostat opening temperature/full open temperature:	82/92°C
Max. fuel inlet temperature:	45°C
Max. restriction at fuel pump inlet:	13kPa
Max. fuel return restriction:	15kPa

- Heavy duty diesel engine
- Anti-vibration mount
- Replaceable fuel filter, oil filter & air filter
- Cooling radiator and fan
- Starter battery (with lead acid, free-maintenance)
- Flexible fuel connection hoses
- Exhaust silencer and bellows
- Operation manuals and circuit diagram documents

## Alternator Specifications

Alternator brand optional	Stamford/Leroy Somer/Marathon/ENGGA
Rated Voltage(V)	400/230
Output way	3 phase 4 wire
Rated power factor	0.8
Exciter	Brushless, Self-exciter
Wire connecting method	Y type, 3 phase 4 wire
Max voltage regulation	±1%
Protection class	IP23
Insulation class	H
Temperature rise grade:	H
Rotor:	Single/double bearing
Efficiency:	95%
Regulator:	AVR
Recovery time(Tr)	1s
Waveform : TIF	<50
Waveform : THF	<2%
Type:	Synchronous alternator
Overload	110% rated load for 2 hour per 24 hour



# Control System

**Model:SmartGen HGM6110(optional Deep Sea)**

**Origin: China**

**Automatic controller**



Operating Environment	
Operating temperature:	-25℃ ~70℃
Relative humidity:	95%
Operating voltage:	DC24V(range: 8-35V)

### Product Features:

HGM6110 series automatic controller, integrating digital, intelligent and network techniques, is used for automatic control and monitoring system of genset. It can carry out functions of automatic start/stop, data measurement, alarm protection and three “remote” (remote control, remote measure and remote communication). The controller uses LCD display, optional display interface including Chinese, English, Spanish, Russian, Portuguese, Turkey, Polish and French with easy and reliable operation.

### Below shut down causes are included:

- Low Coolant Level
- Low oil pressure
- High output frequency
- High output voltage
- Emergency stop
- High coolant temperature
- Low output frequency
- Low output voltage
- Low Fuel Level

### Other Options

<input type="checkbox"/> Oil heater <input type="checkbox"/> Trailer genset <input type="checkbox"/> Coolant heater <input type="checkbox"/> Starting batteries <input type="checkbox"/> Automatic transfer switch (ATS) <input type="checkbox"/> Spare parts	<input type="checkbox"/> Soundproof canopy genset <input type="checkbox"/> Containerized type genset <input type="checkbox"/> Automatic Parallel cabinet <input type="checkbox"/> Fuel tank-Customizable capacity <input type="checkbox"/> Heat exchanger--Water-cooled tower system
--	--

### Guangxi Dingbo Power Equipment Manufacturing Co.,Ltd

Add: No. 10, Kechuang Road, High-tech Zone, Nanning, Guangxi, China

Tel: +86 13481024441

Fax: +86 771 5805 259

Web: [www.dbdieselgenerator.com](http://www.dbdieselgenerator.com)

Email: [dingbo@dieselgeneratortech.com](mailto:dingbo@dieselgeneratortech.com)